

**CB-DSA Control Board  
Cobra™**

## **The Universal Resistive Touch Screen Control Board**

Version: Rev. 1.3

Copyright © 2007 PANJIT International Inc.

[www.panjittouchscreens.com](http://www.panjittouchscreens.com)

**CE & FCC Certified  
UL Approved**

## Features

- Auto detect USB and RS232 interface
- Auto detect 4, 5 and 8-wires resistive touch screen
- Support Plug and Play (PnP) or non-PnP mode of RS232 interface by firmware options
- Support industry highest 4096x4096 resolution
- Low power consumption
- RoHS-Lead free compliant
- Windows OS and Linux customized design
- Support 3, 4, 9 and 25 points of calibration and save parameters on board memory
- Right click function definition
- Double click support
- Multi-monitor supported in Windows OS
- Support drawing test utility
- Auto-detect screen rotation for Intel VGA standard
- WHQL approval

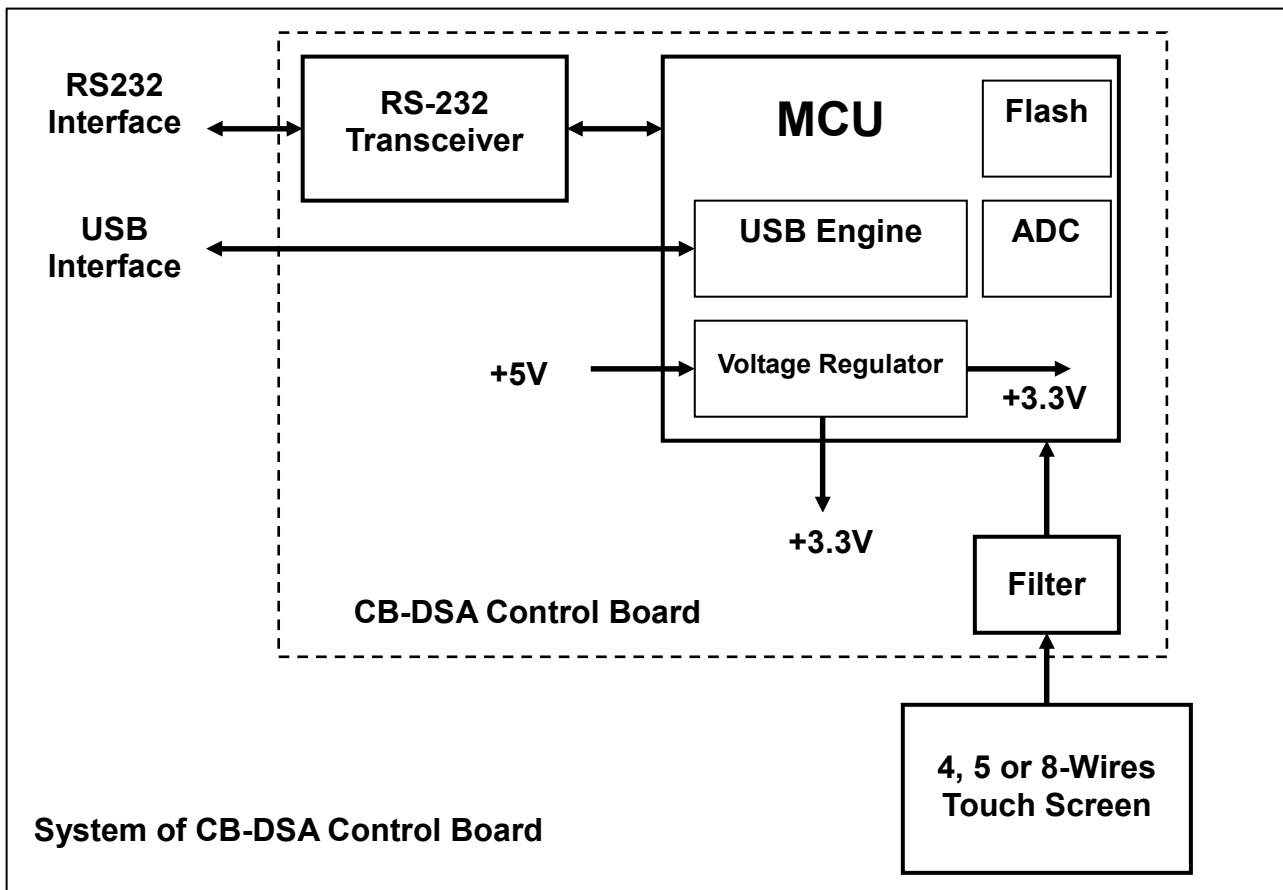
## Specifications

Touch Screen	4, 5, 8-wires touch screen
Communications Protocol	USB / RS232
Resolution	4096 x 4096
Resistance Range	Pin to pin above 50 $\Omega$
Operation Voltage	+5Vdc $\pm$ 5% (inner regulator on chip to 3.3V)
Power Consumption	Standby current : 3.5mA Operating current : typical 10 ~ 16mA depending on touch screen resistance
Operating Temperature	-40 $^{\circ}$ C ~ 85 $^{\circ}$ C
Storage Temperature	-40 $^{\circ}$ C ~ 85 $^{\circ}$ C
Electro-Static Discharge(ESD)	Air : 20kV Contact : 8kV
Dimensions	75mm x 30mm
Portrait	Support 0 $^{\circ}$ , 90 $^{\circ}$ , 180 $^{\circ}$ and 270 $^{\circ}$ screen rotations
Operating Systems	<b>DOS (only RS-232)</b> <b>Windows Series:</b> Windows VISTA Windows XP/XP Embedded, Windows 2000, Windows 98/ME, Windows CE.net 4.2(X86/ARM) <b>Linux Series:</b> Fedora Core I/II, Mandrake 10.0/10.1 RedHat 9.0, SUSE 10.1, ... *See the website for the update information <a href="http://www.panjittouchscreens.com/">http://www.panjittouchscreens.com/</a>
Warranty	1 Year

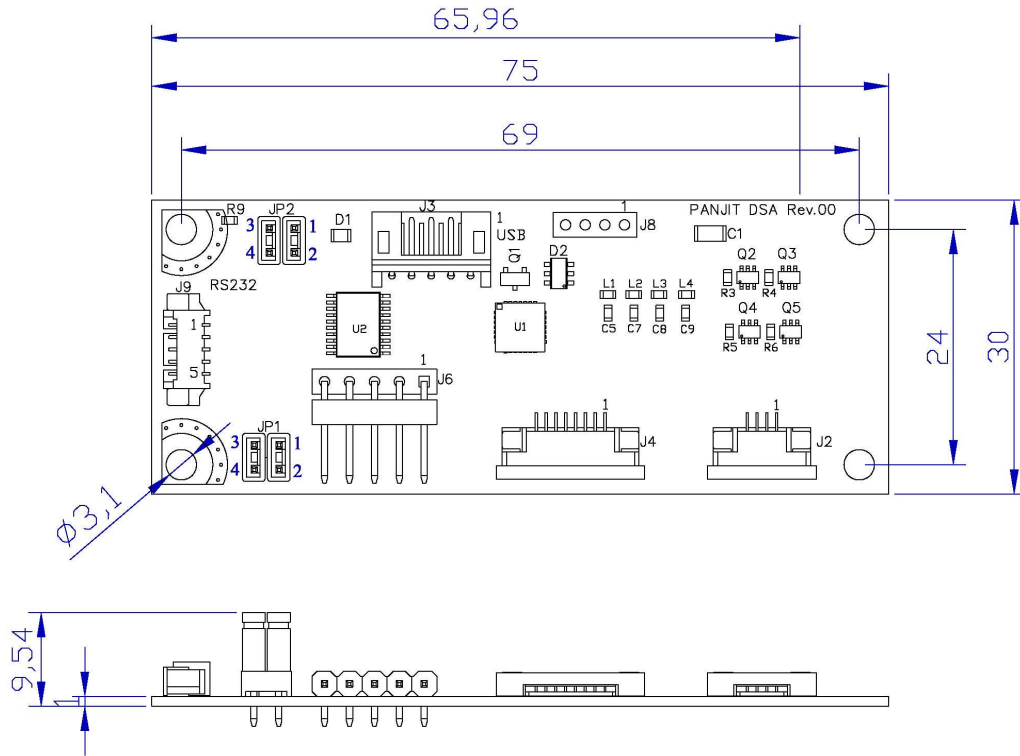
### 1. General Description

CB-DSA control board is an all-in-one combo resistive touch screen control board designed for USB/RS232 interfaces, and especially for 4, 5, 8-wires resistive touch screens. Due to the fully auto-detect functions, the touch screen applications could have dual interfaces (USB and RS232) at the same time without any jumper setup. Furthermore, it also automatically detects 4, 5, 8-wires touch screens. It brings flexibility and selective functionality to supply the application varieties of resistive touch screens.

This high performance electronics platform provides 12-bits high resolution, on-chip non-volatile memory to store calibration data and application parameters, and wide operating temperature range. Combined with high performance controller and enhanced software supports, friendly user interfaces and robust calibration algorithm, CB-DSA control board is the most advanced cost-effective touch screen controller available in the market.



**2. Block Diagram**



Reserve Jumper for Customization

USB Connector

RS232 Connector

4-Wires Pad

4-Wires FPC Connector

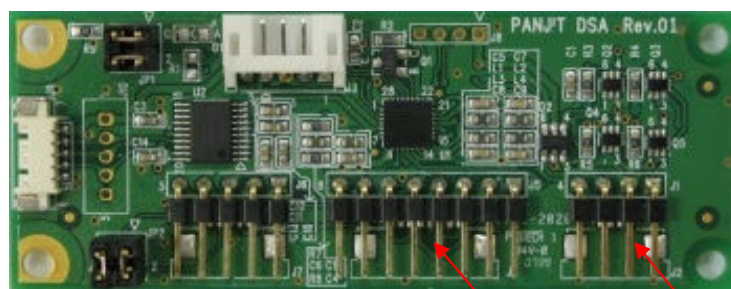
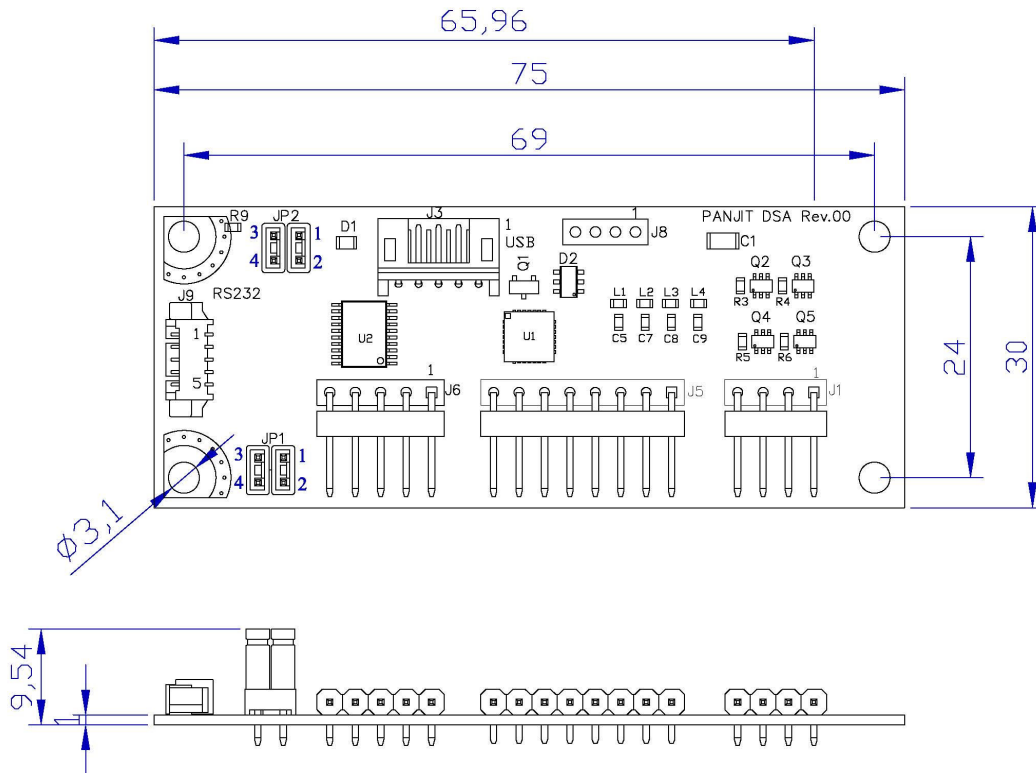
5-Wires Jumper

8-Wires Pad

5-Wires Connector

8-Wires FPC Connector

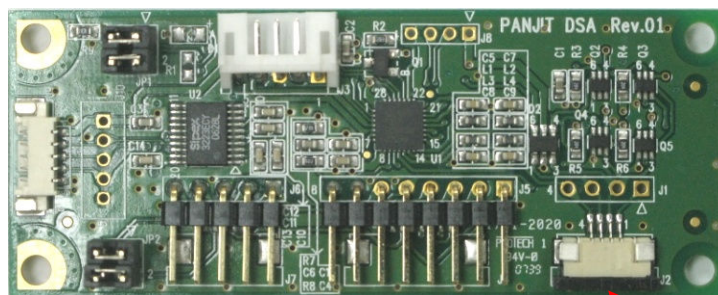
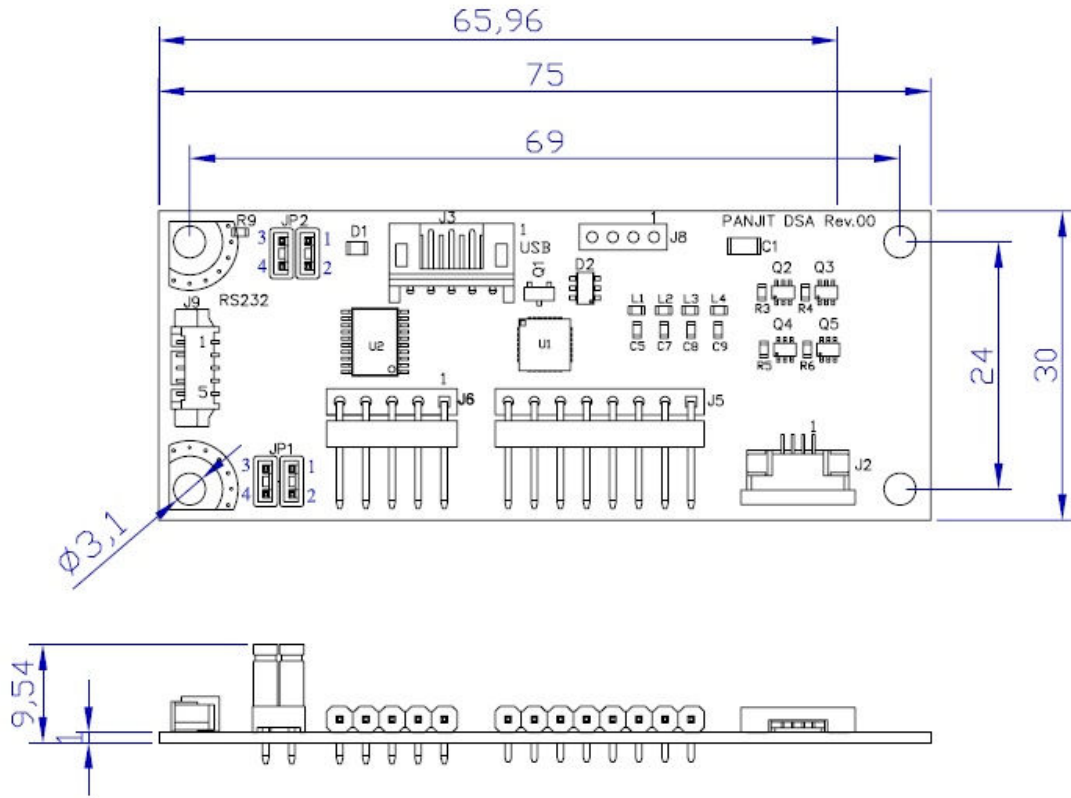
**P/N: CBDSAF**



4-Wires Connector

8-Wires Connector

**P/N: CBDSA4**



4-Wires FPC Connector

**P/N: CBDSAE**

### 3. Setting up CB-DSA

The CB-DSA control board could fully auto-detect USB or RS-232 interface and 4, 5, or 8-wires touch screen. Thus before powering the system, only one of RS-232 or USB cable and only one of 4, 5 or 8-wires touch screen must be connected to the control board.

**NOTE:** If plugging RS-232 and USB interface at the same time before powering up, since the priority of RS-232 is higher than USB, only RS-232 interface will work as a result.

The on board reserve jumper is used to switch customize data protocol or PANJIT default data protocol such like data package, communication protocol, commands, ..., etc. Those extra function or data protocol could be added in a different firmware. The default firmware neglects the reserve jumper.

#### 3.1 Serial Interface

CB-DSA control board can be connected to personal computer or other serial type device. One RS232 transceiver is used to converter the voltage level between the micro controller and COM port, shown in Figure (1). The logical level

is inverted between J9 and MCU. Figure (2) shows the connection between COM port and CB-DSA.

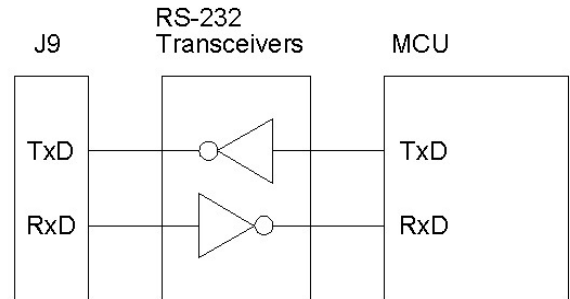


Figure (1) RS232 transceiver

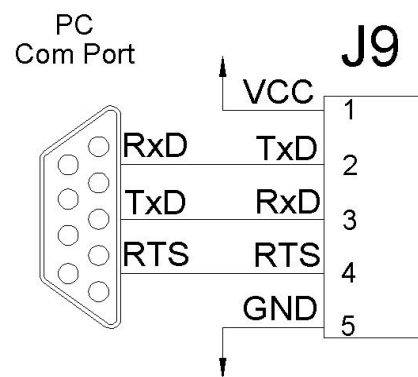
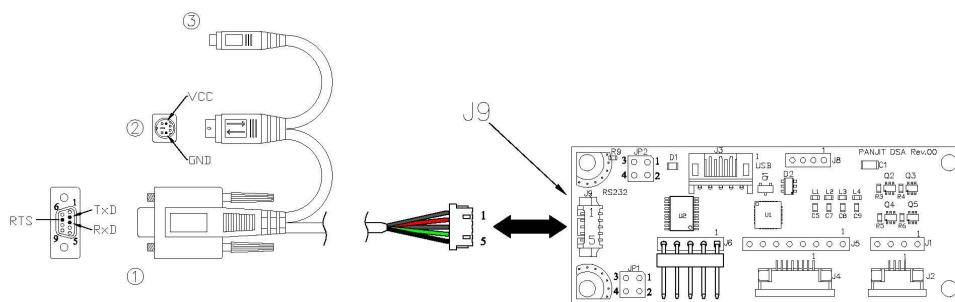
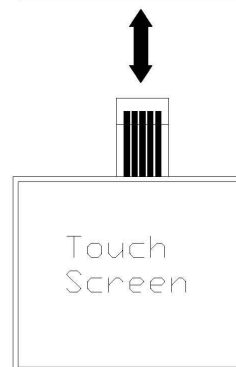


Figure (2) J9 and COM port connection



J9 pin assignment

PIN 1	VCC	5V Power Supply Voltage Input.
PIN 2	TxD	Transmit Data
PIN 3	RxD	Received Data
PIN 4	RTS	Request To Send
PIN 5	GND	Ground.



The connection of using RS232 interface is shown in Figure (3). The PS/2 plug and jack are used to connect the PS/2 port on motherboard for power supply and to mouse or keyboard for spare use, respectively. If in PnP mode, the DTR pin should be echoed to DSR pin in the D-sub connector. If in non-PnP mode, the DTR pin and DSR pin are neglected.

In PnP mode, before booting up the operation system, the touch screen controller should be connected to PC and powered up. Because during the boot up procedure, the operation system will conduct hardware scan to check which peripheral devices are workable. After enumeration procedure, the touch driver will be loaded and start running. This should be noted especially in applications, which the power source is from monitor or other source different with the system. If the touch controller is powered up after the operation system booting procedure, hardware re-scan should be executed to load the touch driver. The touch screen driver is shown as a serial mouse class device. The advantage of PnP mode is if the touch controller is not used, the COM port resource will be released without uninstalling the touch driver.

In non-PnP mode, after installing the non-PnP touch driver, the driver will always be loaded after the driver enumeration of the operation system. Thus, if powering up the touch controller after booting up the operation system, the touch screen still works. The disadvantage is if the touch controller is not used, the COM port resource will

not be released unless uninstalling the touch driver. It is possible to use non-PnP driver with PnP controller by installing non-PnP driver first. The result is in non-PnP mode.

The serial communication protocol is shown as following:

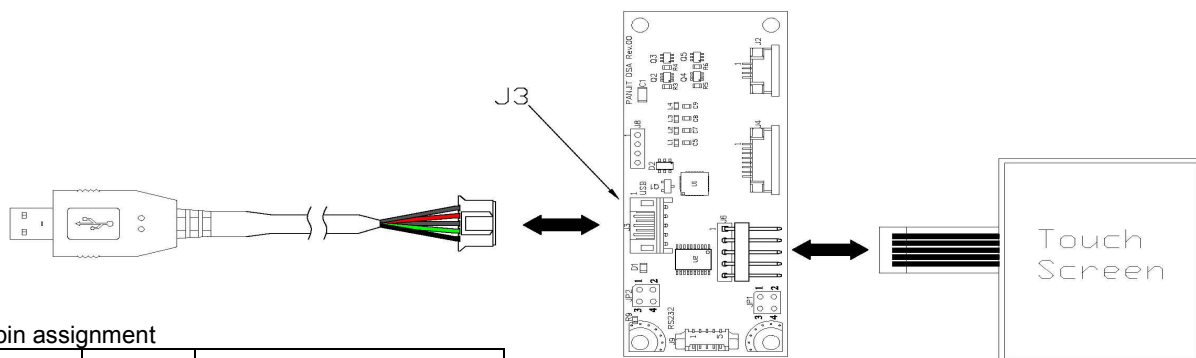
- (1) Transfer rate: 9600bps
- (2) Data transmission mode: Asynchronous
- (3) Bit format: 1 start bit, 8 data bits, 1 stop bit, No parity bit, LSB first

IDLE | START | D0 | D1 | D2 | D3 | D4 | D5 | D6 | D7 | STOP | IDLE

### 3.2 USB Interface

Users can use J3 of DSA control board to connect USB host (PC) as shown in Figure (4). The USB cable has five lines, which are VBUS, GND, D+, D- and drain wire. The VBUS accommodate DC 5V voltage and less then 100mA current. The D+ and D- signal lines control the data between DSA control board and the host. The drain wire connects to ground in DSA control board.

The default firmware of CB-DSA for USB interface is of HID mouse class. The touch driver must be installed to replace the HID mouse driver to conduct the calibration and other parameters setting. In Windows XP tablet edition and Windows Vista operation system, it is possible to



J3 pin assignment

PIN 1	GND	Drain wire
PIN 2	VBUS	5V Power Supply From Host
PIN 3	GND	Ground
PIN 4	D+	D+ Signal
PIN 5	D-	D- Signal



use the inbox driver for touch device. The firmware would be changed to HID digitizer. Thus the touch device can use the standard driver and functions of these two operation systems.

#### 4. Touch Screens

Normally, the resistive touch screen consists of two conductive layers. The top layer is ITO film while the bottom layer can be either ITO film or ITO glass. One of these two layers is suspended by very small spacer dots to separate these two layers. When the operator touches the touch screen, the conductive inner surface of the ITO film makes contact with the conductive coating on the top surface of the ITO film or ITO glass. Then, the controller senses the touch and passes the information to the corresponded system.

CB-DSA supports three major types of resistive touch screens, including 4-wires, 5-wires and 8-wires touch screens. Each type has different considerations. 4-wires touch screen is the preferred solution for low cost applications. 5-wires is for applications requiring durability and reliability over time. And 8-wires is the preferred solution for applications requiring accuracy and no re-calibration over time.

#### 4.1 4-Wires Touch Screen

About 4-wires touch screen interface, J2 (FPC connector) and J1 (Housing connector) have the same pinout definition as shown in Table (1). However, due to the powerful calibration algorithm of PANJIT, the X and Y directions could be exchanged. And in each direction, the direction can also be inverted, i.e. X+ pin and X- pin can be exchanged and the same as Y+ and Y-. Thus, as only as XYXY type pinout of 4-wires touch screens can be directly connected to CB-DSA. Figure (5) shows some examples of XYXY type layouts of 4-wires touch screens. If the pinout is XXYY type as shown in Figure (6), one intermediate cable is necessary to crossover the pin2 and pin3.

Table (1) The pinout of 4-wires touch screen

Pin1	Y-
Pin2	X-
Pin3	Y+
Pin4	X+

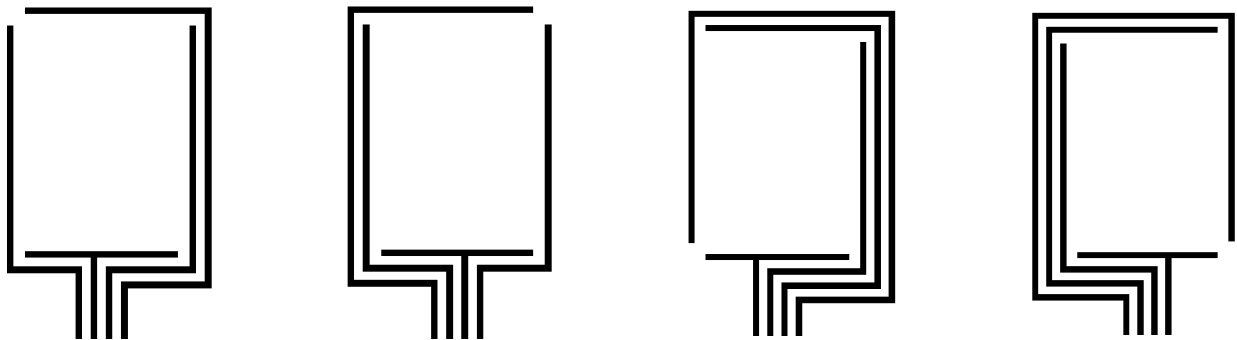


Figure (5) Some layout examples of XYXY type 4-wires touch screens

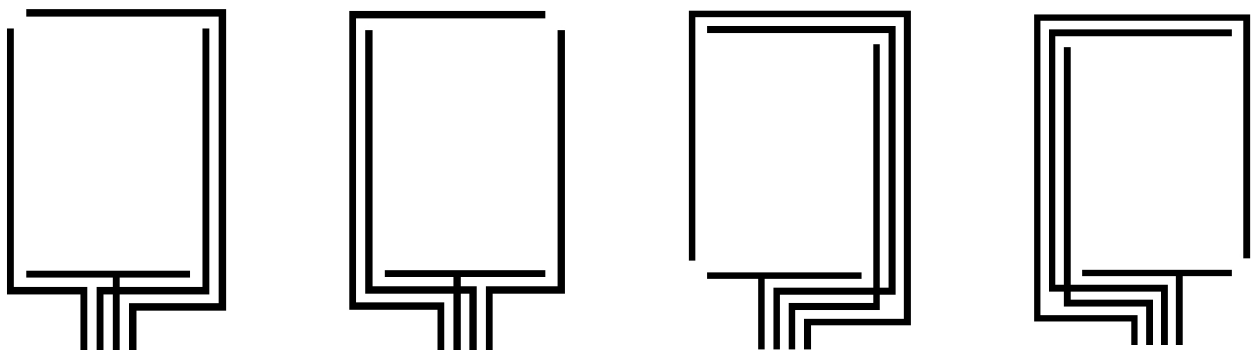


Figure (6) Some layout examples of XXYY type 4-wires touch screens

### 4.2 5-Wires Touch Screen

CB-DSA supports two major pinouts of 5-wires touch screen design shown in Figure (7) and Figure (8) by setting JP2 jumper. One is symmetric and the other is asymmetric. Table (2) lists the pinout of 5-wires touch screen interface.

Part Number Ordering:

CB-DSAFS      CB-DSAFA  
CB-DSAHS      CB-DSAHA  
CB-DSAES      CB-DSAEA

	ZIF	AMP
F	4 & 8 Pin	5 Pin
H	----	4, 5, 8 Pin
E	4 Pin	5 & 8 Pin

S=Symmetry 1234  
A=Asymmetry 1324

Table (2) The pinout of 5-wires touch screen

	Symmetric	Asymmetric
Pin1	RT	RT
Pin2	LT	LT
Pin3	S	S
Pin4	LB	RB
Pin5	RB	LB

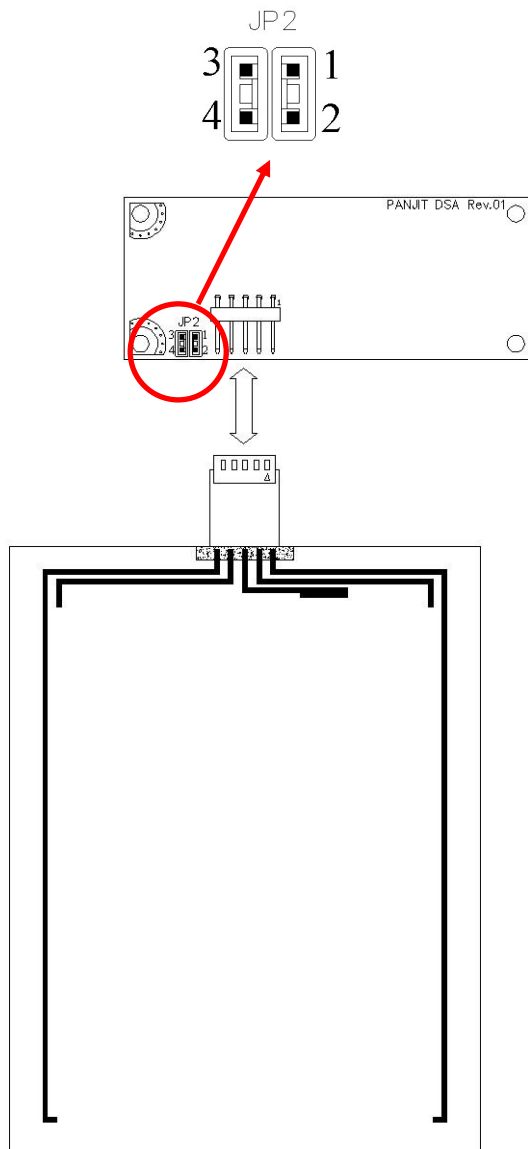


Figure (7) Symmetric 5-wires touch screen

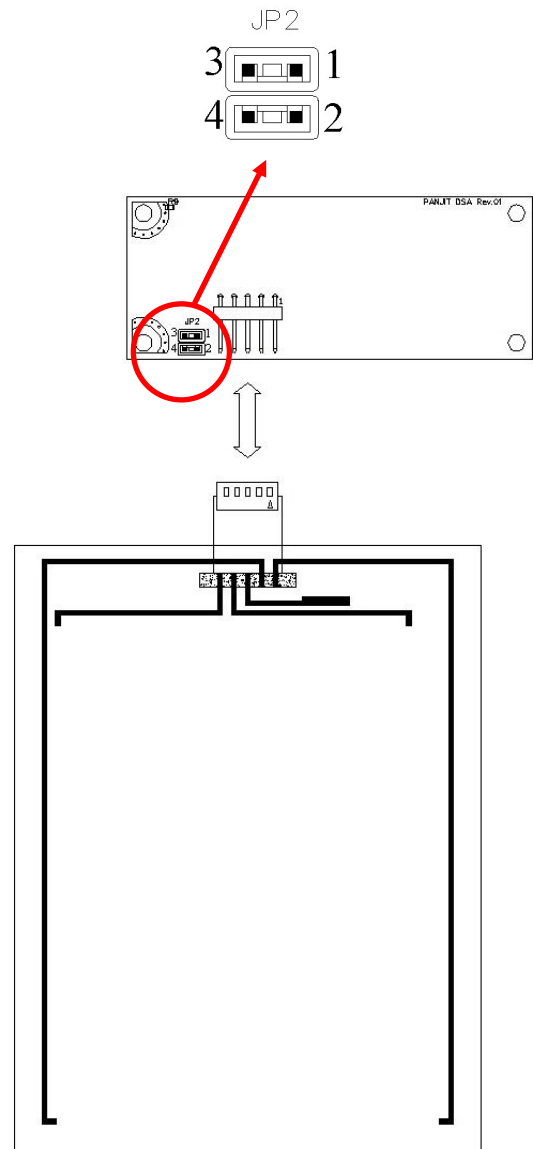


Figure (8) Asymmetric 5-wires touch screen

### 4.3 8-Wires Touch Screen

The 8-wires touch screen interfaces of CB-DSA are designed by the most popular pin assignments. FPC connector and Housing connector are different as listed in Table (3). Figure (9) shows how the FPC type 8-wires touch screen connects to CB-DSA control board. The FPC connector is upside contact. The tail of the touch screen can not be reversed. But in housing type as shown in Figure (10), the tail can be reversed to connect to CB-DSA because the robust calibration algorithm of PANJIT can calibrate this Y-direction reverse or X-direction reverse.

Table (3) The pinout of 8-wires touch screen

	FPC type	Housing type
Pin1	SX+ (Sense)	Y- (Excite)
Pin2	SX- (Sense)	SY- (Sense)
Pin3	X- (Excite)	SY+ (Sense)
Pin4	X+ (Excite)	Y+ (Excite)
Pin5	Y- (Excite)	X+ (Excite)
Pin6	SY- (Sense)	SX+ (Sense)
Pin7	SY+ (Sense)	SX- (Sense)
Pin8	Y+ (Excite)	X- (Excite)

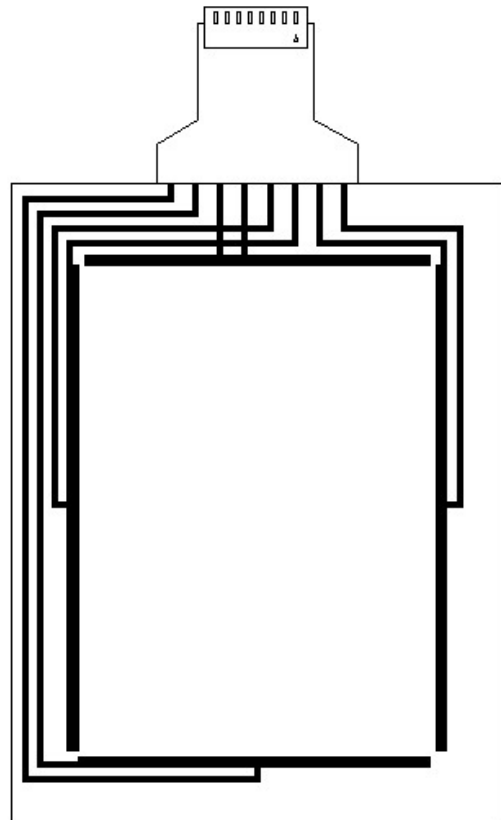
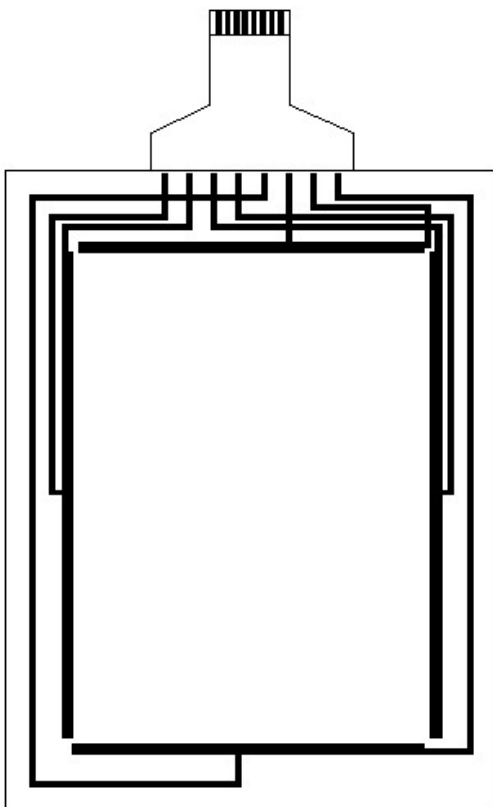
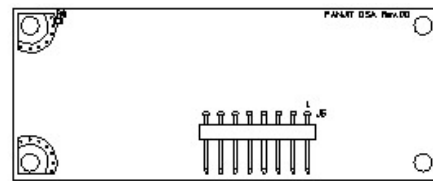
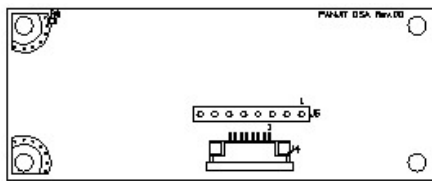
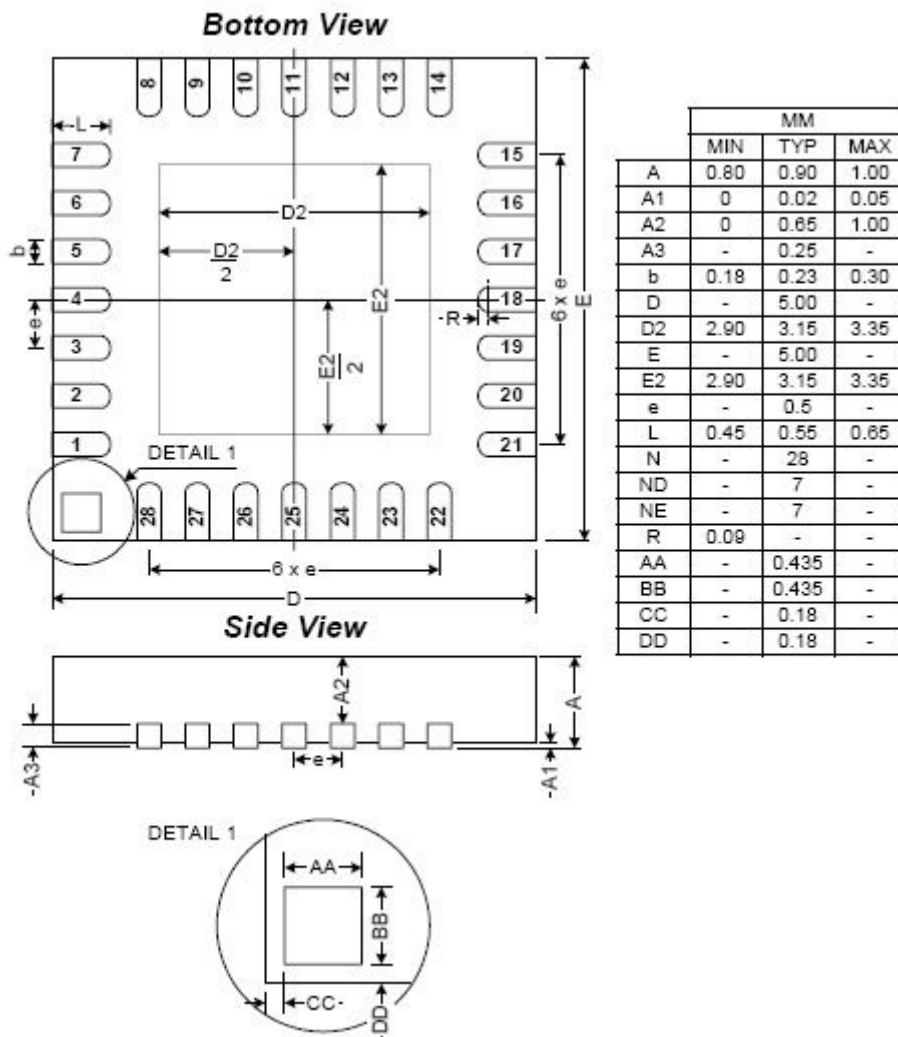


Figure (9) Asymmetric 8-wires touch screen

Figure (10) Symmetric 8-wires touch screen

### Microcontroller Chip:

PANJIT offers the microcontroller chip for Original Equipment Manufacturer (OEM) applications. For higher volume applications, a microcontroller chip is less expensive and provides you with more flexibility to custom design your product.





# Mouser Electronics

Authorized Distributor

Click to View Pricing, Inventory, Delivery & Lifecycle Information:

[PANJIT Touch Screens:](#)

[CB-DSAFA](#)